

# The River Series

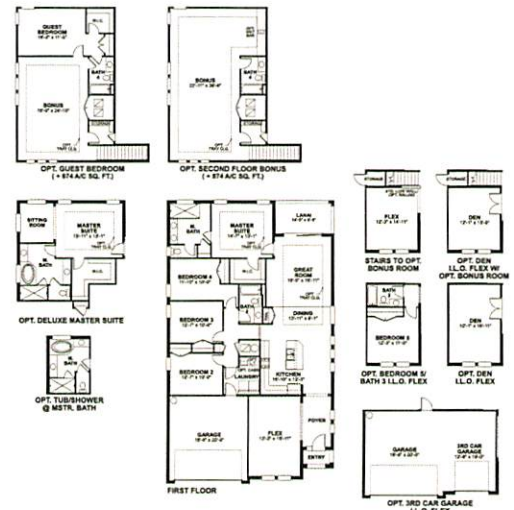
**Arlington** | 1,761 sq. ft.  
3 Bed/2 Bath  
2-Car Garage



**Spinnaker** | 1,890 sq. ft.  
3 Bed/2 Bath  
2-Car Garage



**Braden** | 2,136-3,010 sq. ft.  
3-5 Bed/2-4 Bath/Flex  
2-3 Car Garage



more lots 182-177  
RIVER 129-147  
52 x 130'



# SWEETWATER

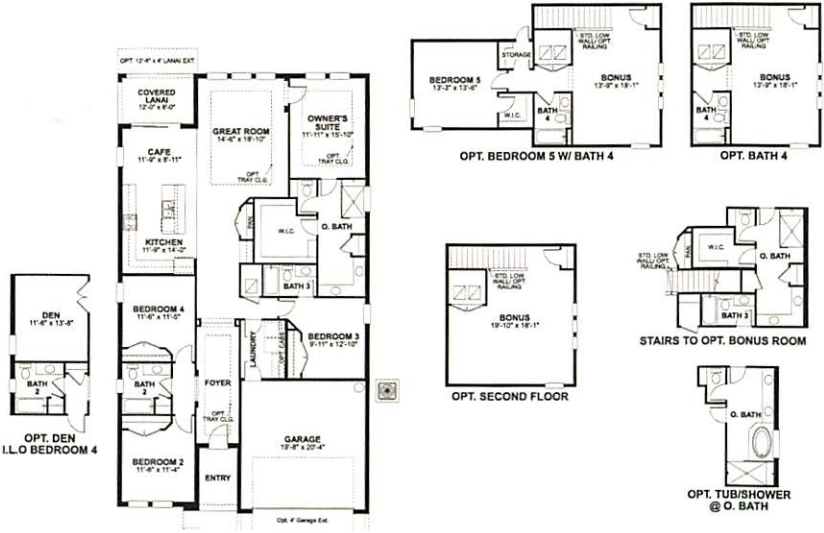
*Inventory only*  
*NO POOLS*

AT LAKEWOOD RANCH

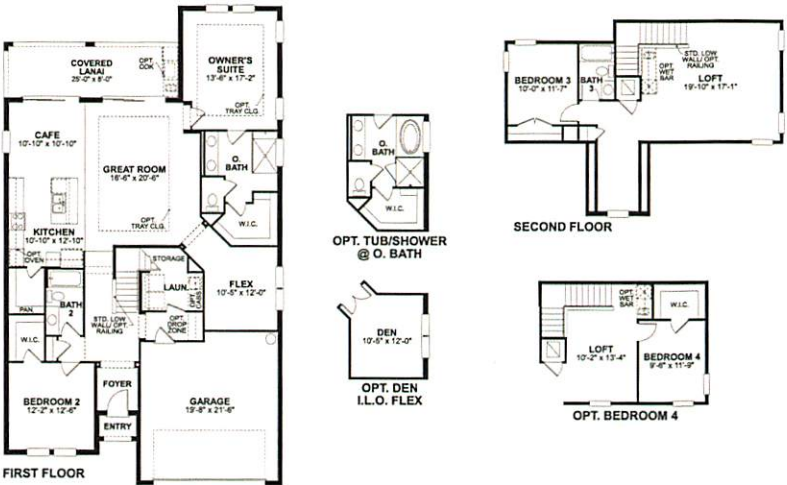
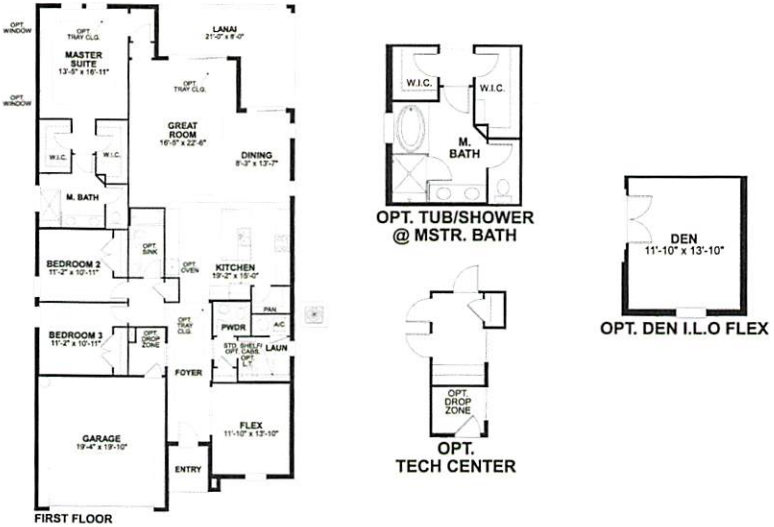


M/I HOMES

**Calusa** | 2,195-3,322 sq. ft.  
 3-5 Bed/3-4 Bath  
 2-Car Garage



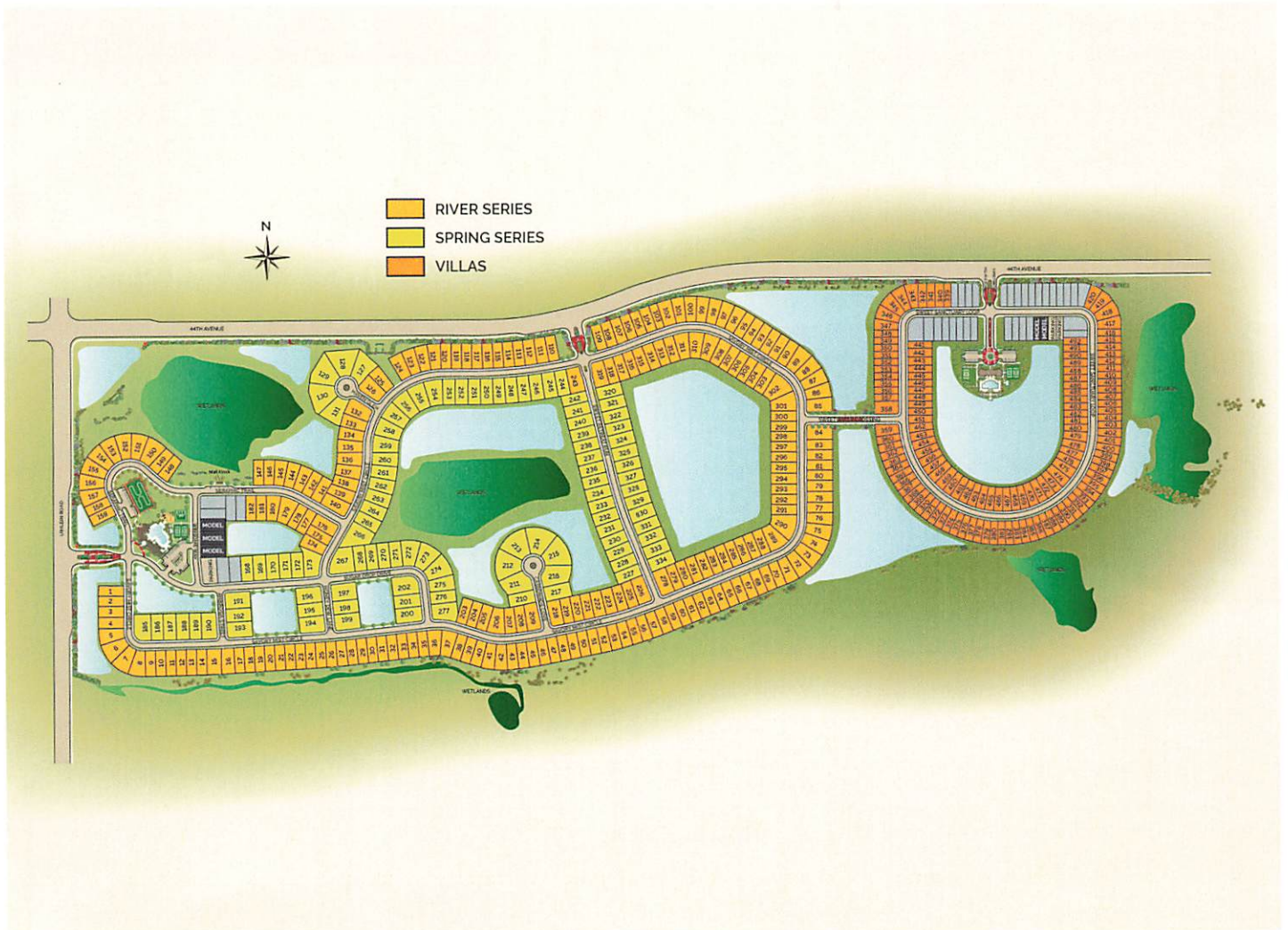
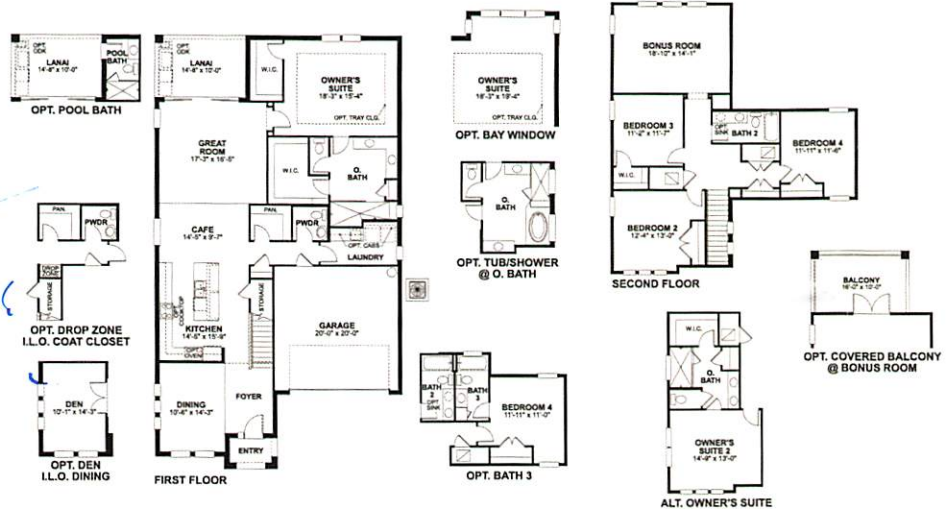
**Amelia** | 2,336 sq. ft.  
 3 Bed/2.5 Bath/Flex  
 2-Car Garage



**Daintree** | 2,559 sq. ft.  
 3-4 Bed/3 Bath/Flex/Loft  
 2-Car Garage



**Halifax** | 3,031 sq. ft.  
 4 Bed/2.5 Bath/Bonus  
 2-Car Garage



For more information, contact [SalesSarasota@mihomes.com](mailto:SalesSarasota@mihomes.com) or (941) 225-2111

[mihomes.com](http://mihomes.com)

\*Sales restrictions apply. Prices are not guaranteed to be available. Prices, terms, architectural details, and designs are subject to change without notice. Home color, style, and structure may vary from artist's rendering. Features such as, but not limited to, tile roofs, paver brick driveways, coach lights, and landscaping may be optional and/or vary from rendering as shown. M/I Homes reserves the right to make substitutions to any materials or products with comparable or better without notification. Please see the New Home Consultant in your community for details. Not all elevations shown are offered in every community. See NHC for what elevations are offered in this community.

